

FOR LEASE ► NEWBERG, OR

CRESTVIEW CROSSING



PACIFIC HWY 99W & CRESTVIEW DRIVE



WINGSTOP
COMING SOON!



Newberg is the gateway to Oregon's wine country and considered one of the world's best and fastest growing communities in Oregon. With over 200 wineries, the valley is home to hiking trails, bike paths, farmer's markets, and covered bridges making the area popular for tourists and locals alike. Crestview Crossing, Newberg's first, Class A shopping center, was designed with pedestrian-friendly walkways, plazas, and fantastic exposure to serve the surrounding Willamette Valley.

ADDRESS

4105-4215 E Crestview Drive
Newberg, OR 97132

AVAILABLE SPACE

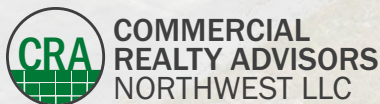
- 1,105 SF - 3,845 SF

TRAFFIC COUNTS

US Hwy 99W - 36,753 ADT ('25)

HIGHLIGHTS

- This new 36,773 SF development is located at a high-traffic signalized intersection along Hwy 99W. It has excellent access to transportation, nearby attractions such as the Allison Inn & Spa and proximity to a large regional medical center immediately across the intersection.
- Crestview Crossing provides excellent trade area visibility and access to retail, services and restaurants.



Ashley Heichelbech 503.490.7212 | ashley@cra-nw.com

Jeff Olson 503.957.1452 | jeff@cra-nw.com

Kelli Maks 503.680.3765 | kelli@cra-nw.com

503.274.0211
www.cra-nw.com

CRESTVIEW CROSSING
4105-4215 E CRESTVIEW DR
NEWBERG, OR



MOUNTAIN VIEW MIDDLE SCHOOL

NEWBERG HIGH SCHOOL
1,389 STUDENTS

SITE

36,753 ADT (25)

34,928 ADT (25)

44,835 ADT (25)

GEORGE FOX UNIVERSITY
4,200 STUDENTS

Providence HOSPITAL
529 EMPLOYEES
40 BEDS

Portland Community College
NEWBERG CAMPUS

Hess Creek

Spring Brook

Spring Brook

N Springbrook Rd

Hess Creek





NEWBERG

NEWBERG HIGH SCHOOL
1,389 STUDENTS

MOUNTAIN VIEW MIDDLE SCHOOL

SPRINGBROOK
NEW DEVELOPMENT ON 450-ACRES COMING SOON!



BI-MART



Fred Meyer

PACIFIC HWY 99W



Providence HOSPITAL
529 EMPLOYEES
40 BEDS



PACIFIC HWY 99W

PROVIDENCE DRIVE

Spring Meadow @ Crestview
NEW APARTMENT PROJECT
196 APARTMENT UNITS
COMING SOON!

CRESTVIEW CROSSING

E CRESTVIEW DRIVE

CRESTVIEW GREEN
NEW RESIDENTIAL PROJECT
14 LARGE LOTS
96 TOWNHOME LOTS
PAD FOR 24-UNIT APT BLDG
COMING SOON!





WINE & CO.



CLARA NAIL SPA

FIVE GUYS
BURGERS and FRIES

CRESTVIEW
CROSSING

BEDMART



T-Mobile

OnPoint
COMMUNITY CREDIT UNION



E CRESTVIEW DRIVE

36,753 ADT (25)

99W

PACIFIC HWY 99W

PROVIDENCE DRIVE



TENANTS

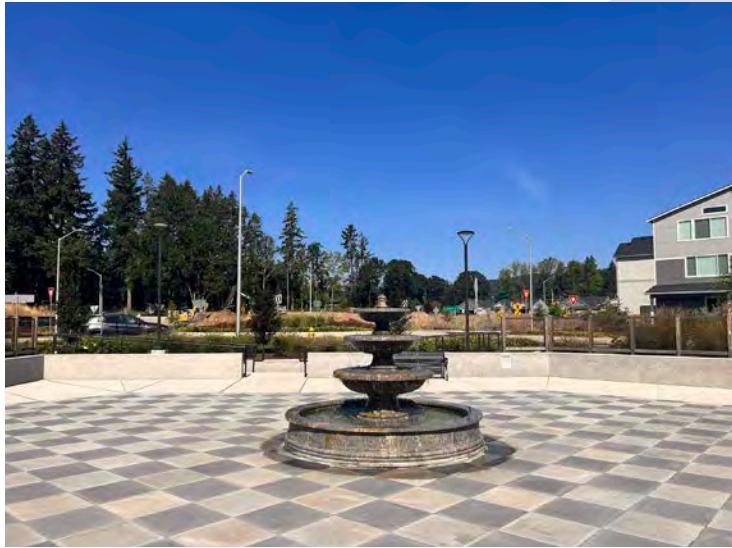
CRESTVIEW CROSSING
4105-4215 E CRESTVIEW DR
NEWBERG, OR



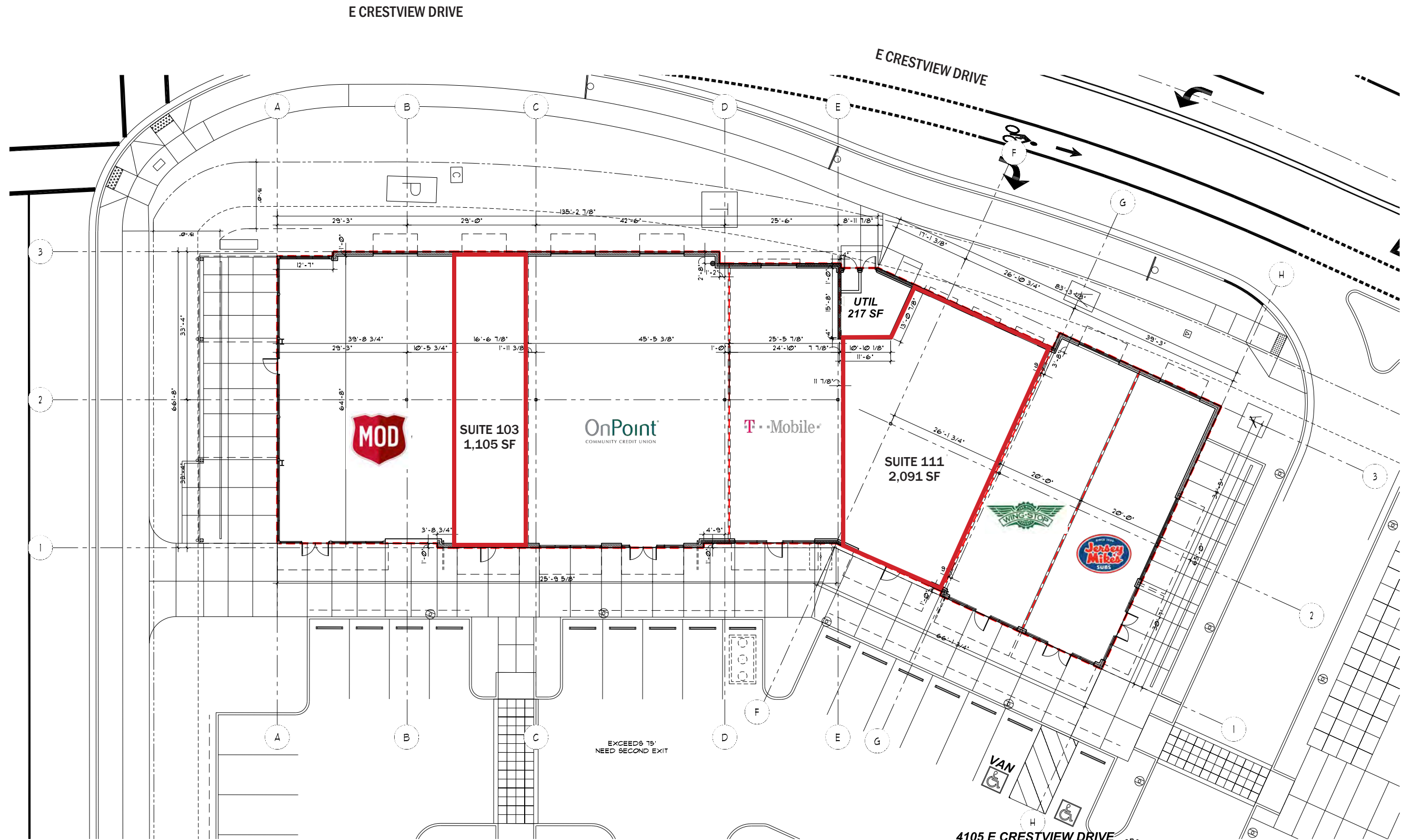
SITE PLAN

AVAILABILITY

BUILDING A		
Suite 103	1,105 SF	Inline retail space
Suite 111	2,091 SF	Inline retail space
BUILDING D		
Suite 141	1,706 SF	Prime end-cap with operable doors and patio amenity outdoor seating space
Suite 135	3,845 SF	Prime end-cap with operable doors and patio amenity outdoor seating space



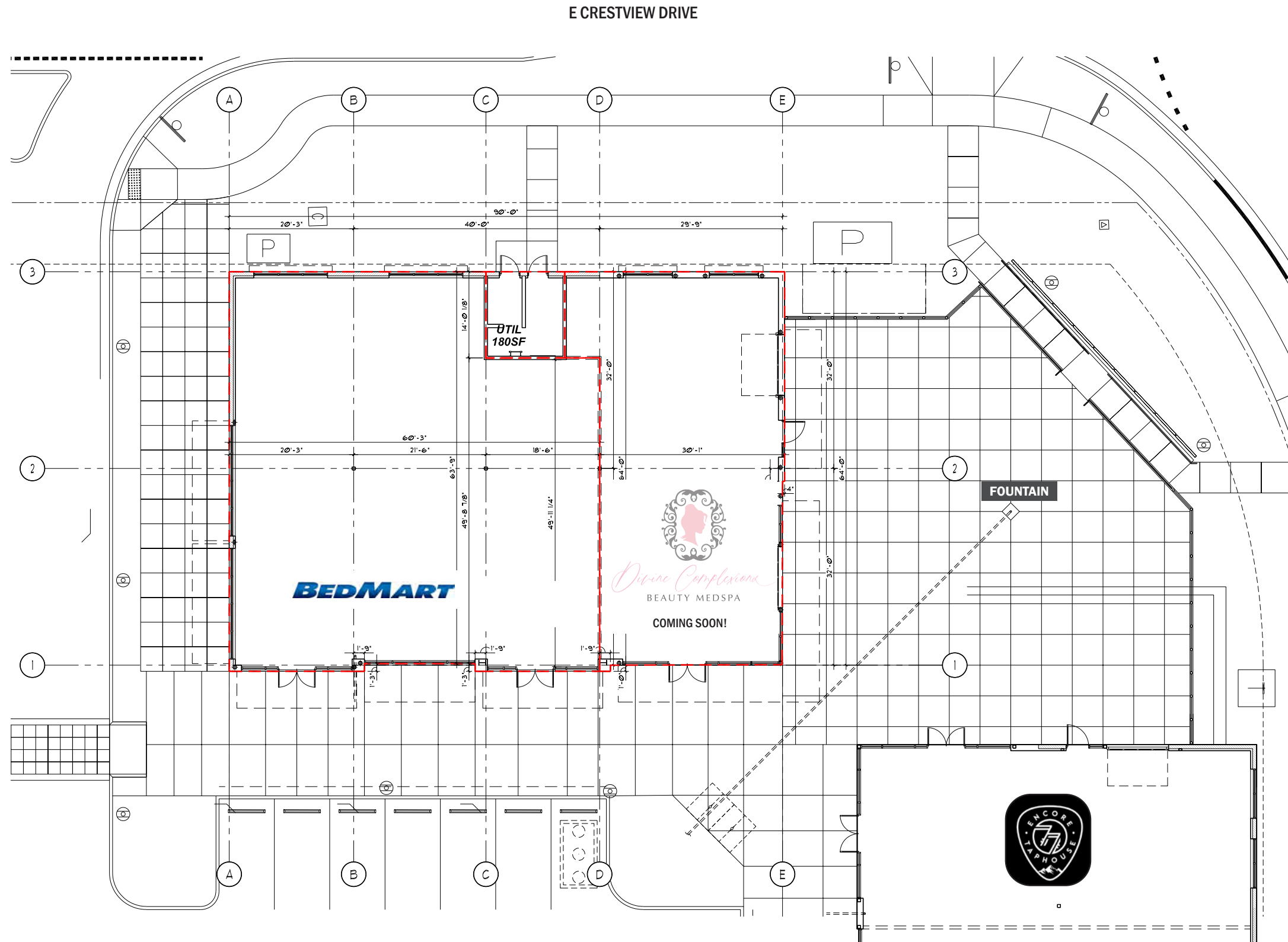
99W
PACIFIC HWY 99W



1 BUILDING 'A' - LEASE PLAN
3/32" = 1'-0"

4105 E CRESTVIEW DRIVE
NEWBERG, OR 97132

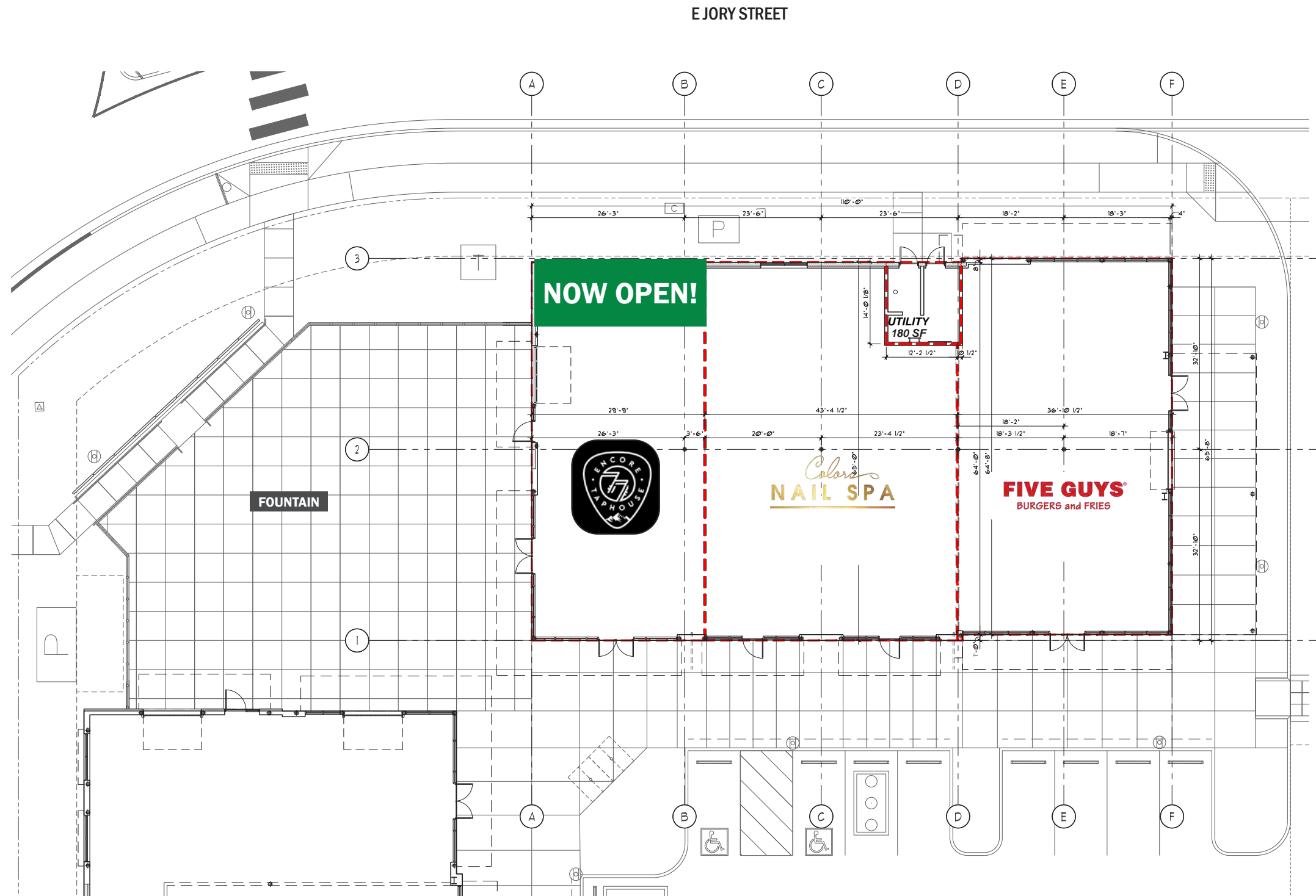




LEASE PLAN
BUILDING 'B' - FLOOR PLAN
1/8" = 1'-0"

4203 E CRESTVIEW DRIVE
NEWBERG, OR 97132

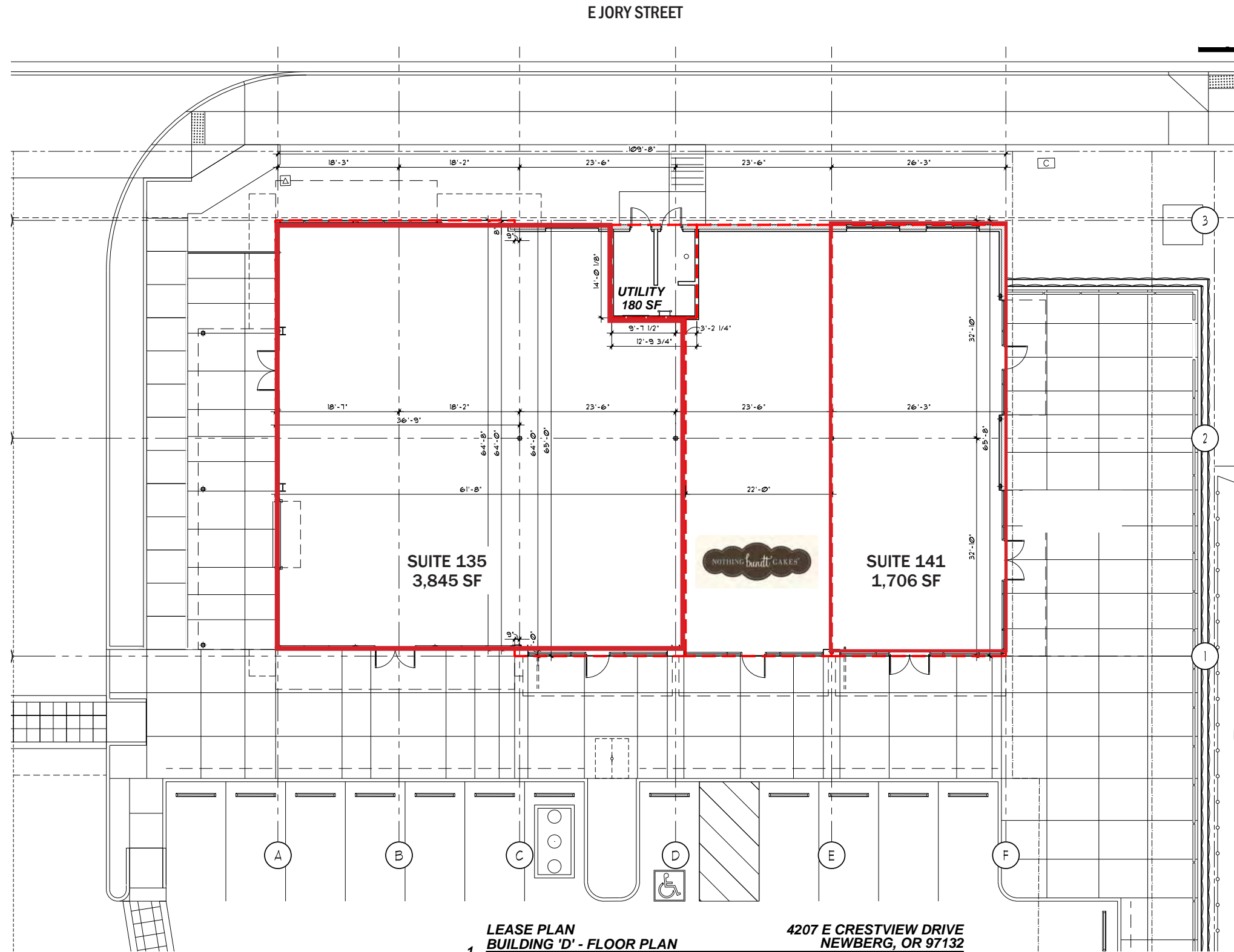




LEASE PLAN
BUILDING 'C' - FLOOR PLAN
1
1/8" = 1'-0"

4205 E CRESTVIEW DRIVE
NEWBERG, OR 97132

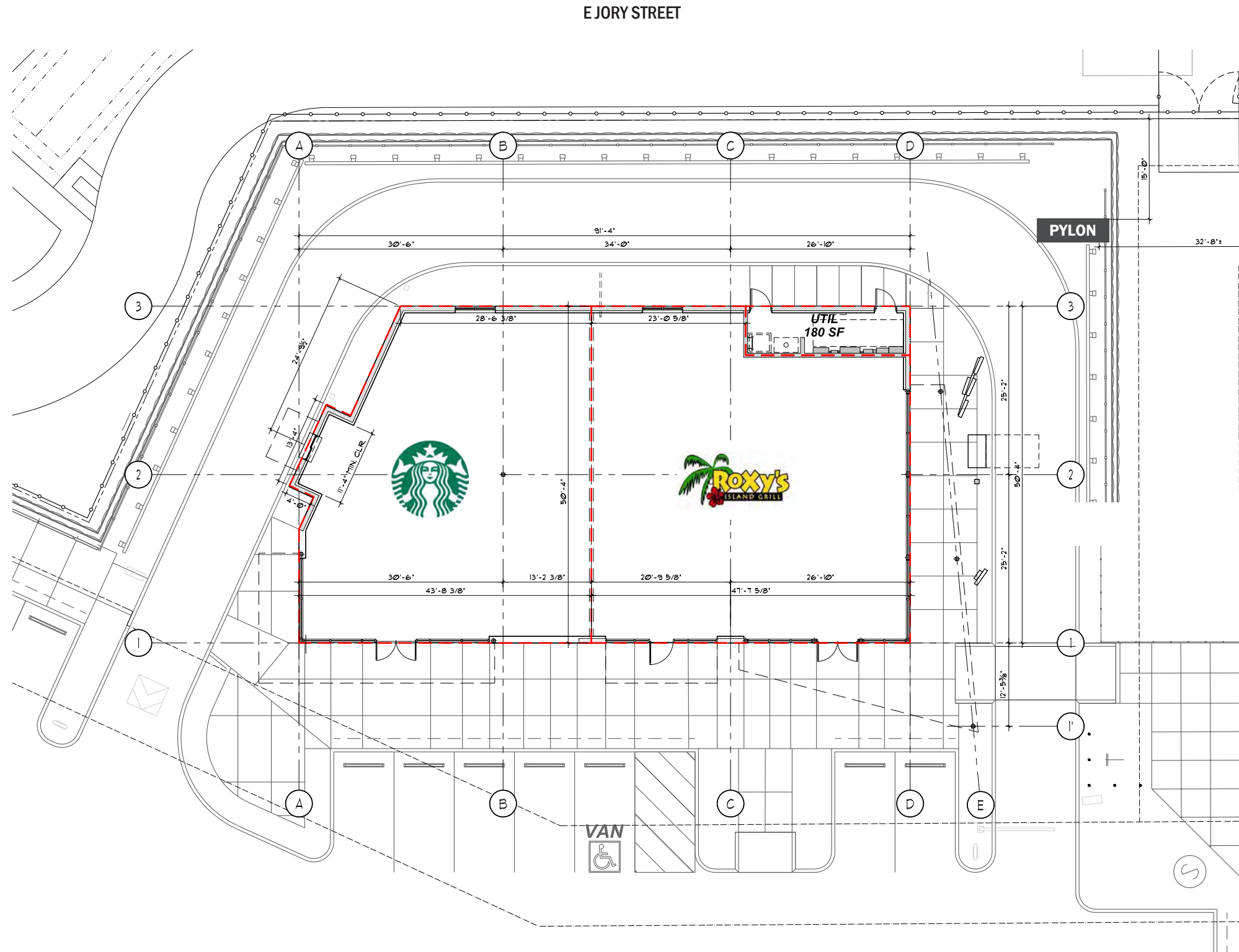




1 LEASE PLAN
BUILDING 'D' - FLOOR PLAN
1/8" = 1'-0"

4207 E CRESTVIEW DRIVE
NEWBERG, OR 97132





99W
PACIFIC HWY 99W

LEASE PLAN
BUILDING 'E' - FLOOR PLAN
1/8" = 1'-0"

4215 E CRESTVIEW DRIVE
NEWBERG, OR 97132



CRESTVIEW CROSSING 4105-4215 E CRESTVIEW DR

NEWBERG, OR

DEMOGRAPHIC SUMMARY

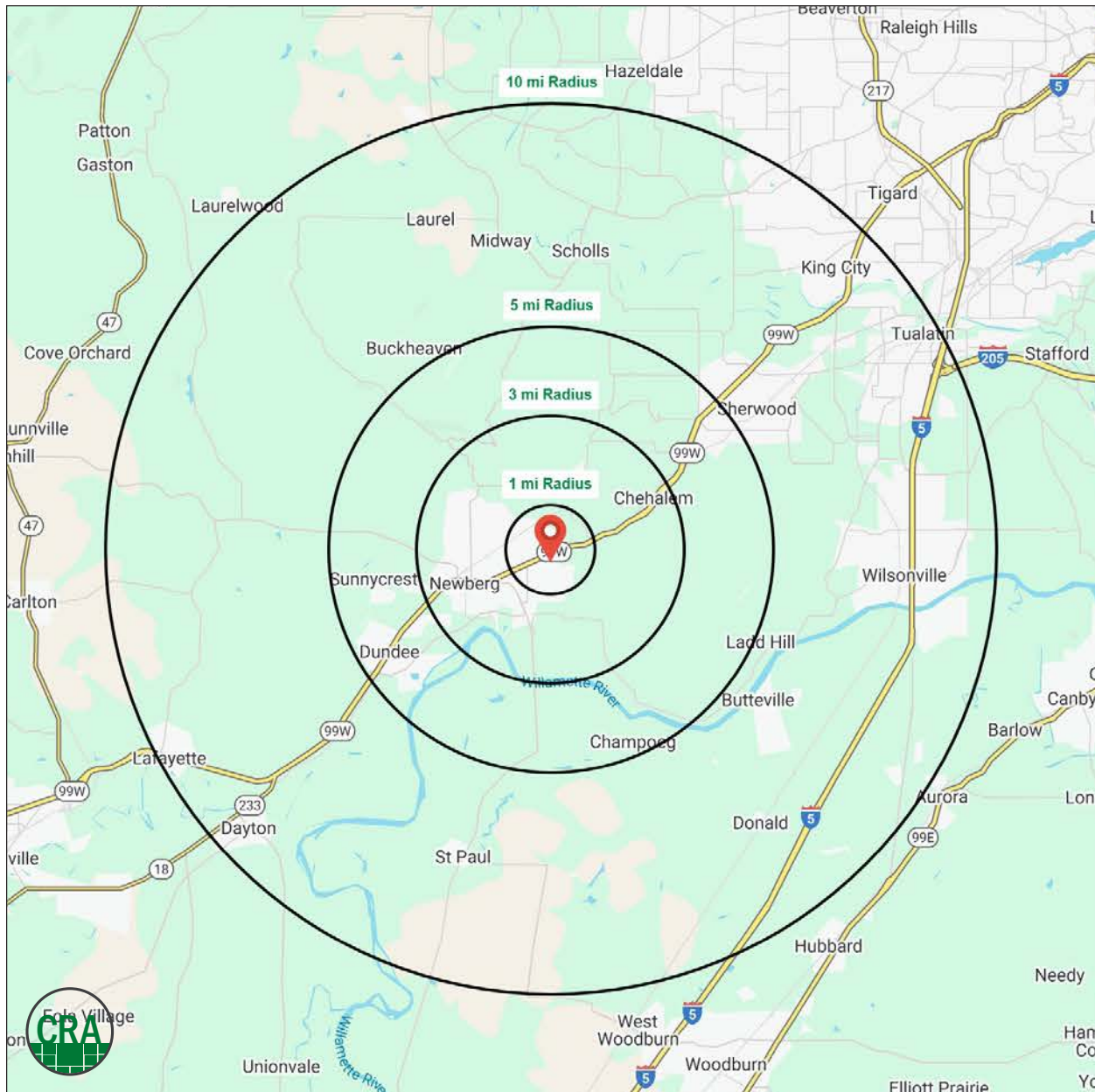
Source: Regis - SitesUSA (2025)	1 MILE	3 MILE	5 MILE	10 MILE
Estimated Population 2025	6,182	30,476	44,720	172,780
Average HH Income	\$152,299	\$136,477	\$147,129	\$146,280
Median HH Income	\$134,493	\$107,416	\$116,108	\$115,950
Median Home Value	\$576,978	\$553,064	\$598,167	\$608,828
Daytime Demographics 16+	4,283	19,755	25,966	118,439
Some College or Higher	74.1%	70.5%	72.9%	75.8%

\$136,477

Average Household Income
3 MILE RADIUS

39.7

Median Age
3 MILE RADIUS



Summary Profile

2010-2020 Census, 2025 Estimates with 2030 Projections
 Calculated using Weighted Block Centroid from Block Groups



Lat/Lon: 45.3106/-122.9354

Crestview Crossing Newberg, OR 97132	1 mi radius	3 mi radius	5 mi radius	10 mi radius
Population				
2025 Estimated Population	6,182	30,476	44,720	172,780
2030 Projected Population	6,349	30,775	44,976	170,975
2020 Census Population	6,172	29,448	43,666	169,081
2010 Census Population	4,933	25,764	39,064	146,231
Projected Annual Growth 2025 to 2030	0.5%	0.2%	0.1%	-0.2%
Historical Annual Growth 2010 to 2025	1.7%	1.2%	1.0%	1.2%
2025 Median Age	39.7	36.5	38.4	40.4
Households				
2025 Estimated Households	2,456	11,158	16,202	65,984
2030 Projected Households	2,548	11,422	16,531	66,329
2020 Census Households	2,290	10,545	15,427	63,067
2010 Census Households	1,764	9,069	13,708	55,155
Projected Annual Growth 2025 to 2030	0.7%	0.5%	0.4%	0.1%
Historical Annual Growth 2010 to 2025	2.6%	1.5%	1.2%	1.3%
Race and Ethnicity				
2025 Estimated White	79.4%	78.9%	79.7%	75.1%
2025 Estimated Black or African American	1.5%	1.5%	1.2%	2.0%
2025 Estimated Asian or Pacific Islander	4.7%	3.2%	3.8%	7.8%
2025 Estimated American Indian or Native Alaskan	1.0%	0.9%	0.8%	0.8%
2025 Estimated Other Races	13.4%	15.5%	14.4%	14.3%
2025 Estimated Hispanic	16.0%	17.0%	15.8%	15.2%
Income				
2025 Estimated Average Household Income	\$152,299	\$136,477	\$147,129	\$146,280
2025 Estimated Median Household Income	\$134,493	\$107,416	\$116,108	\$115,950
2025 Estimated Per Capita Income	\$60,686	\$50,333	\$53,571	\$55,997
Education (Age 25+)				
2025 Estimated Elementary (Grade Level 0 to 8)	1.8%	2.4%	2.5%	2.9%
2025 Estimated Some High School (Grade Level 9 to 11)	4.6%	5.1%	4.4%	3.1%
2025 Estimated High School Graduate	19.4%	22.1%	20.2%	18.2%
2025 Estimated Some College	20.5%	22.5%	22.5%	21.7%
2025 Estimated Associates Degree Only	6.8%	8.1%	8.2%	8.5%
2025 Estimated Bachelors Degree Only	33.2%	26.9%	27.4%	29.6%
2025 Estimated Graduate Degree	13.6%	12.9%	14.8%	15.9%
Business				
2025 Estimated Total Businesses	356	1,446	2,045	8,689
2025 Estimated Total Employees	2,471	11,027	13,460	68,740
2025 Estimated Employee Population per Business	6.9	7.6	6.6	7.9
2025 Estimated Residential Population per Business	17.3	21.1	21.9	19.9

©2025, Sites USA, Chandler, Arizona, 480-491-1112 Demographic Source: Applied Geographic Solutions 11/2025, TIGER Geography - RS1

This report was produced using data from private and government sources deemed to be reliable. The information herein is provided without representation or warranty.

For more information, please contact:

ASHLEY HEICHELBECH 503.490.7212 | ashley@cra-nw.com

JEFF OLSON 503.957.1452 | jeff@cra-nw.com

KELLI MAKS 503.680.3765 | kelli@cra-nw.com



KNOWLEDGE

RELATIONSHIPS

EXPERIENCE

 15350 SW Sequoia Parkway, Suite 198 • Portland, Oregon 97224



www.cra-nw.com



503.274.0211

The information herein has been obtained from sources we deem reliable. We do not, however, guarantee its accuracy. All information should be verified prior to purchase/leasing. View the Real Estate Agency Pamphlet by visiting our website, www.cra-nw.com/home/agency-disclosure.html. CRA PRINTS WITH 30% POST-CONSUMER, RECYCLED-CONTENT MATERIAL.