

# LAKE VIEW VILLAGE

310 N State Street, Suite 218 | Lake Oswego, OR 97035



FOR LEASE: 1,736 Square Feet

[www.cbre.us/portland](http://www.cbre.us/portland)

**CBRE**



# LAKE VIEW VILLAGE

310 N State Street, Suite 218 | Lake Oswego, OR 97035

## O V E R V I E W

### Office Space Available

Located right in the heart of downtown Lake Oswego, Lake View Village is home to highly-regarded national and local shopping retailers. The Farmer's Market, art exhibitions and jazz concerts, in addition to a number of community events, are held year round.

Completed in 2003, Lake View Village is the prime location for many 4-star dining experiences such as Five spice Seafood + Wine Bar, Holy Taco, Manzana Rotisserie Grill and St. Honore' Boulangerie.

Covered parking, convenient public transportation stops and available signage are just a few of the elements offered.

- \$35.00/RSF NNN (NNN \$15.66)
- Beautifully finished offices with plenty of light
- Large open areas
- Three interior private offices
- Covered parking is available
- Seasonal farmer's market
- Venue for concerts, art attractions and community events that are held year round
- High-end medical and professional services
- Adjacent to Millennium Park Plaza
- Spectacular views of Mount Hood and the lake





# LAKE VIEW VILLAGE

310 N State Street, Suite 217 | Lake Oswego, OR 97035



## RESTAURANTS

Bamboo Sushi  
Chuckie Pies  
Domaine Serene Wine Lounge  
Five Spice  
Genini Bar & Grill  
Holy Taco  
LO Ice Creamery & Restaurant  
Manzana Rotisserie Grill  
Pizzeria Sul Lago  
Salt & Straw  
St. Honore' Bakery  
Tada Sushi Studio  
Tucci Restaurant

## COFFEE

Peet's Coffee  
Starbucks

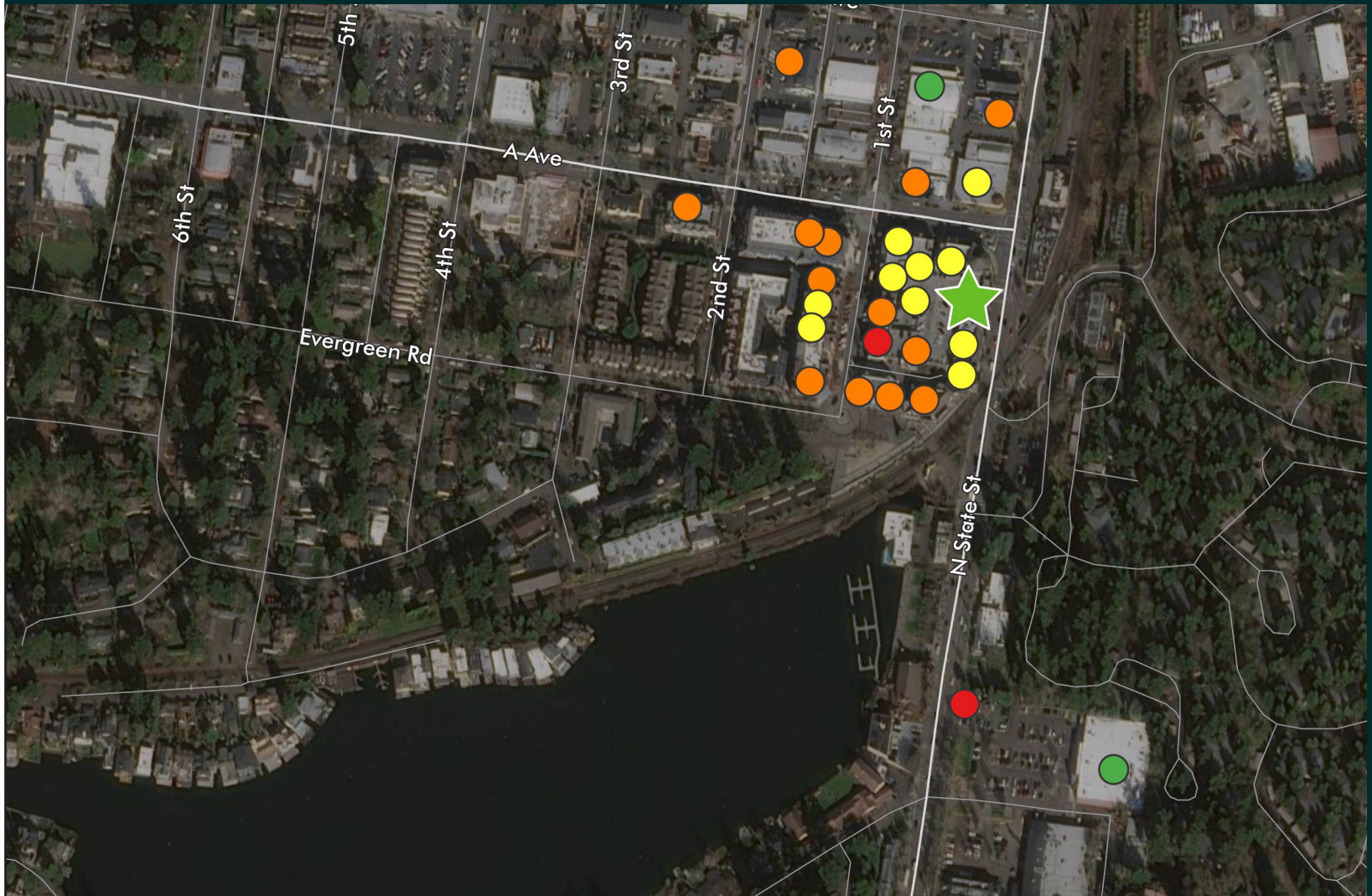
## RETAIL

Adorn  
Anna's Bridal Boutique  
Chicos  
Dream Cloud  
Grapevine Boutique  
Kassab Jewelers  
Lucky Me  
Lucky Me  
Mapel Boutique  
Wishbone Home & Design

## GROCERY

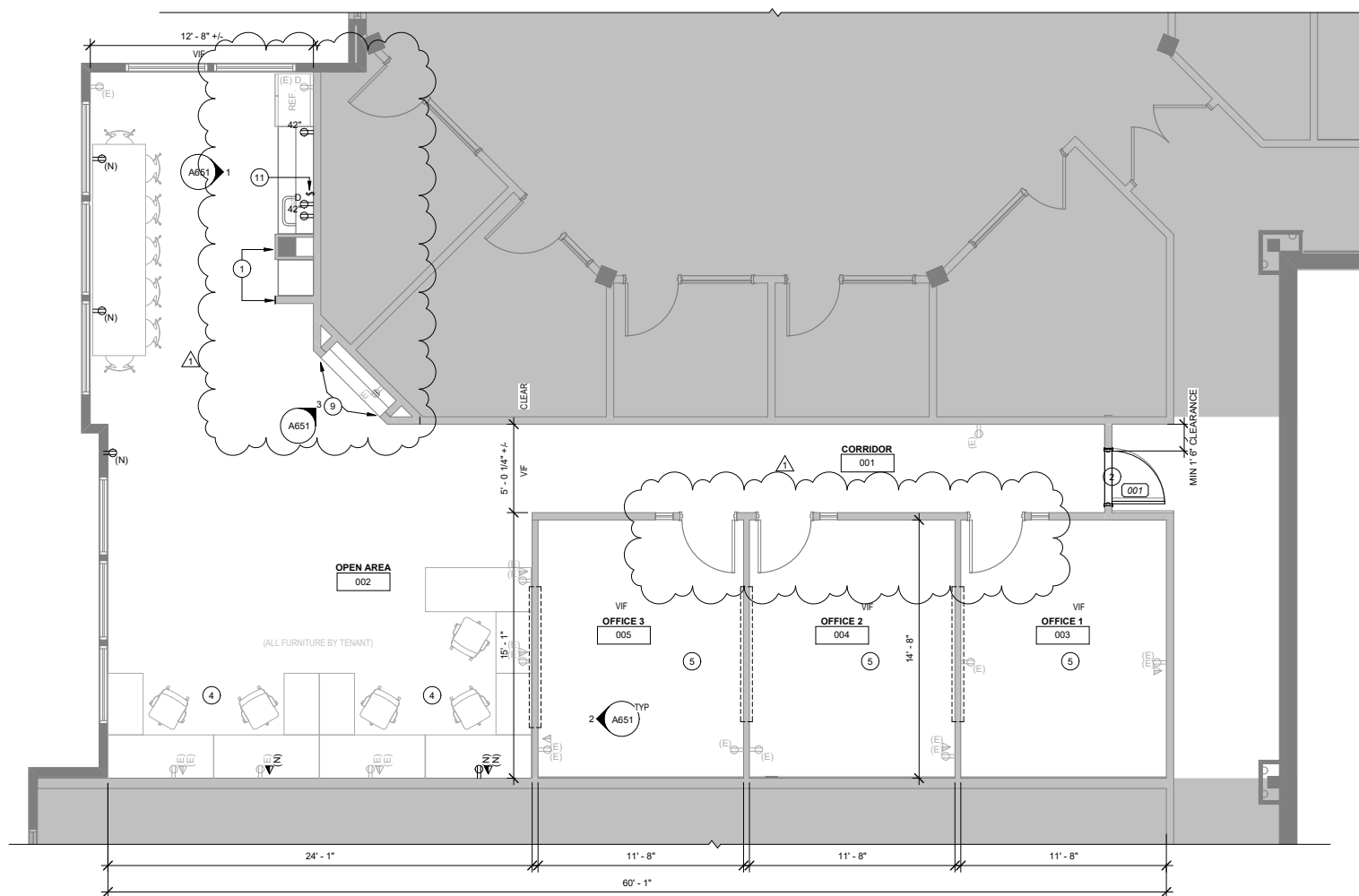
Rite Aid  
Whole Foods

## NEARBY AMENITIES



# A V A I L A B I L I T Y

## SUITE 218



Suite	Size/SF	Rates
218	1,736	\$35.00 - RSF NNN (NNN \$15.66)



# LAKE VIEW VILLAGE

310 N State Street, Suite 217 | Lake Oswego, OR 97035



JENNIFER MEDAK

First Vice President

+1 503 221 4853

[jennifer.medak@cbre.com](mailto:jennifer.medak@cbre.com)

Broker is licensed in OR

CBRE, INC.

1300 SW Fifth Avenue

35th Floor

Portland, OR 97201

**CBRE**

© 2023 CBRE, Inc. All rights reserved. This information has been obtained from sources believed reliable, but has not been verified for accuracy or completeness. You should conduct a careful, independent investigation of the property and verify all information. Any reliance on this information is solely at your own risk.

CBRE and the CBRE logo are service marks of CBRE, Inc. All other marks displayed on this document are the property of their respective owners, and the use of such logos does not imply any affiliation with or endorsement of CBRE.

[www.cbre.us/portland](http://www.cbre.us/portland)

